

Norbert Becker
Dušan Petrić
Marija Zgomba
Clive Boase
Mino Madon
Christine Dahl
and Achim Kaiser



Mosquitoes and Their Control

Second Edition

 Springer

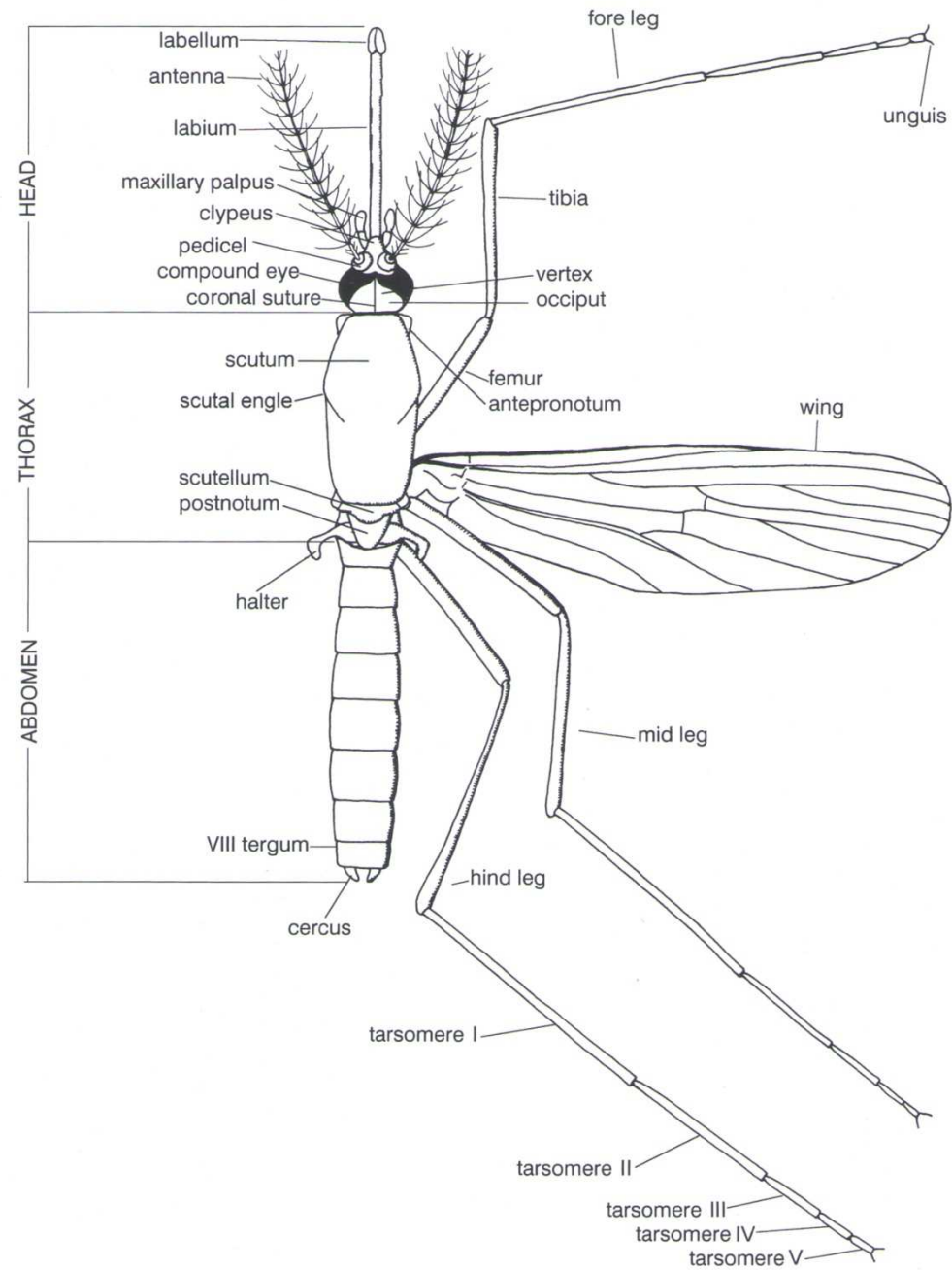
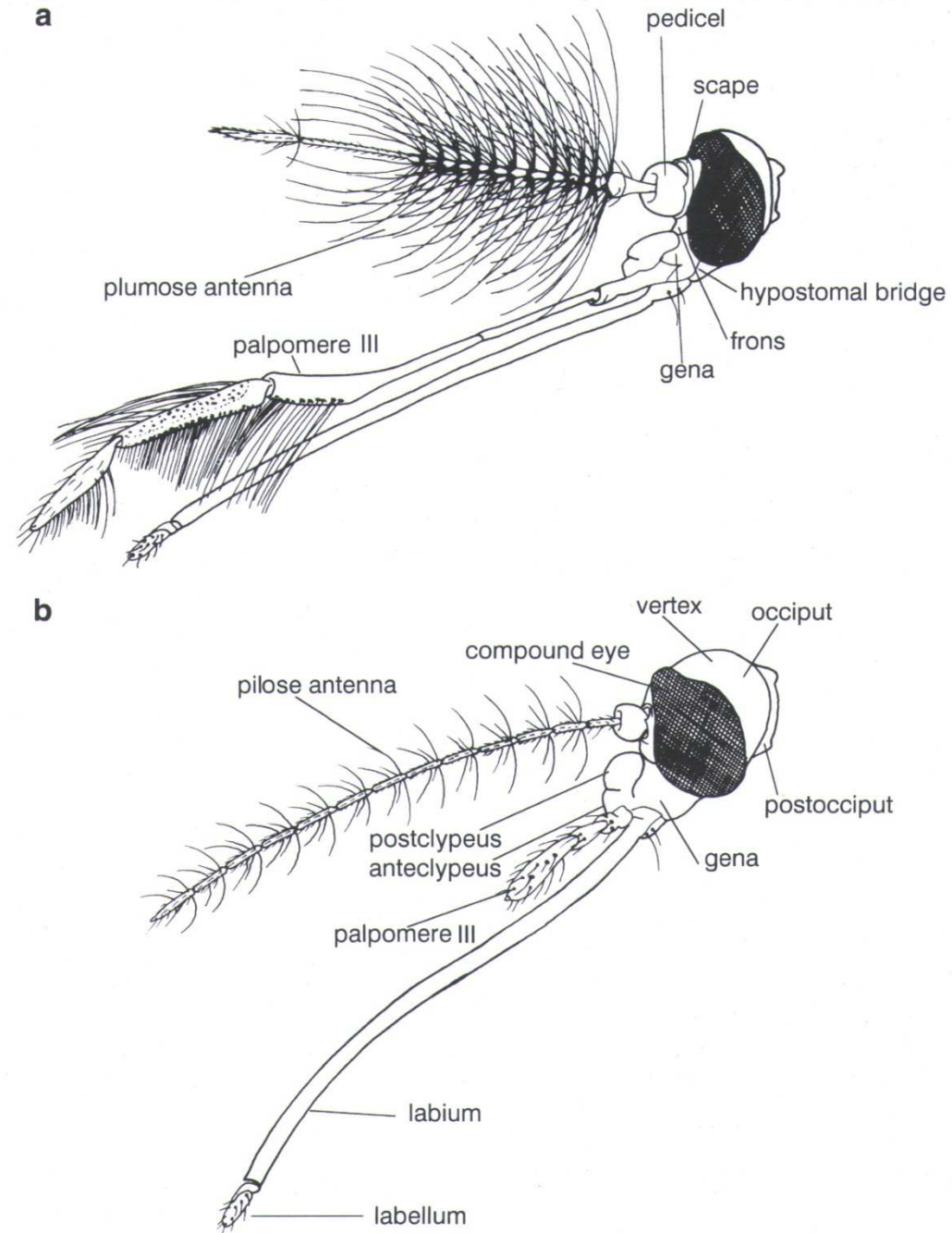


Fig. 5.1 General outline of a female culicine mosquito (after Marshall 1938)

Fig. 5.2 Head of (a) male; (b) female culicine mosquito (after Wood et al. 1979)

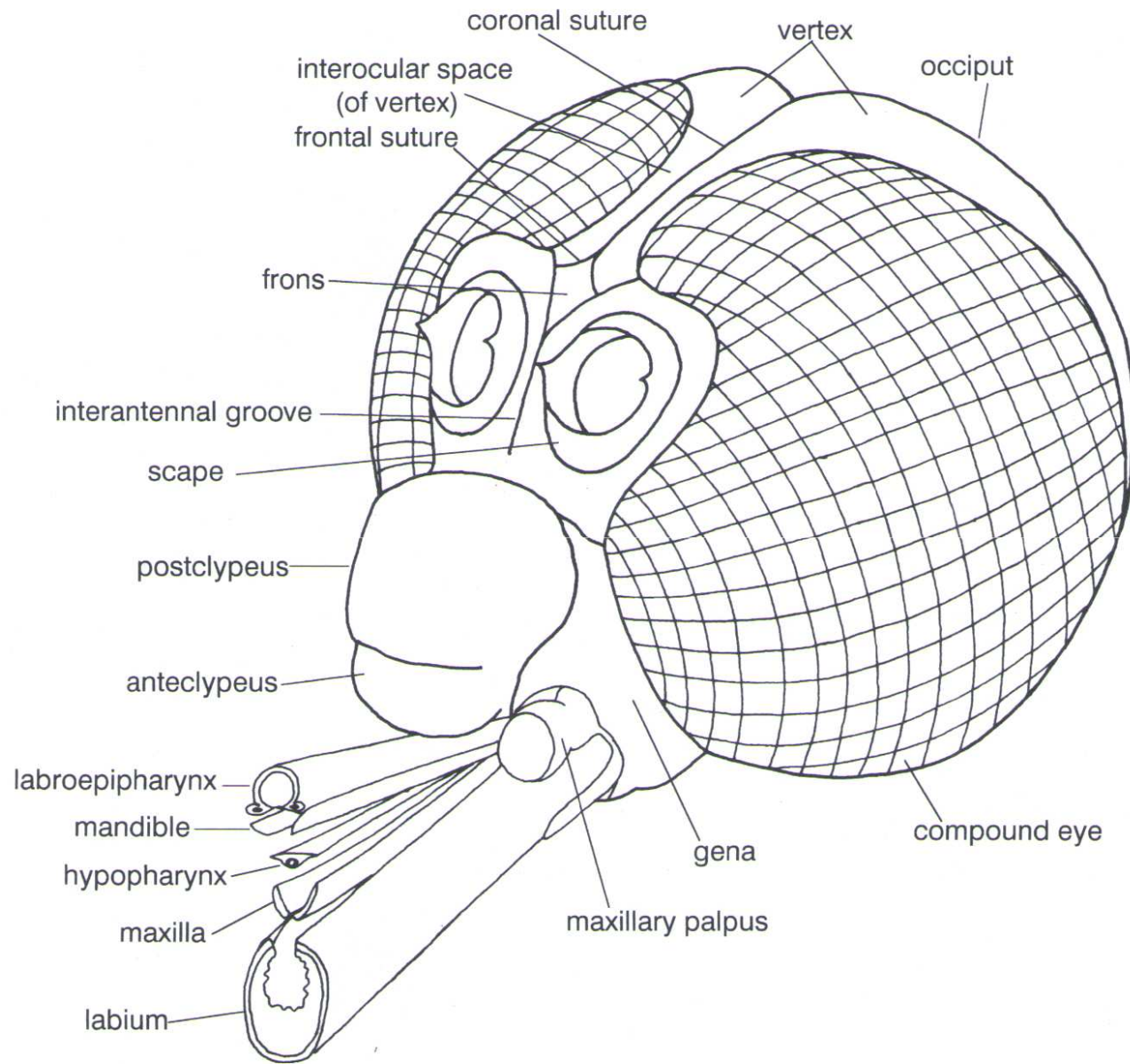


Fig. 5.3 Head regions and mouthparts (after Clements 1992)

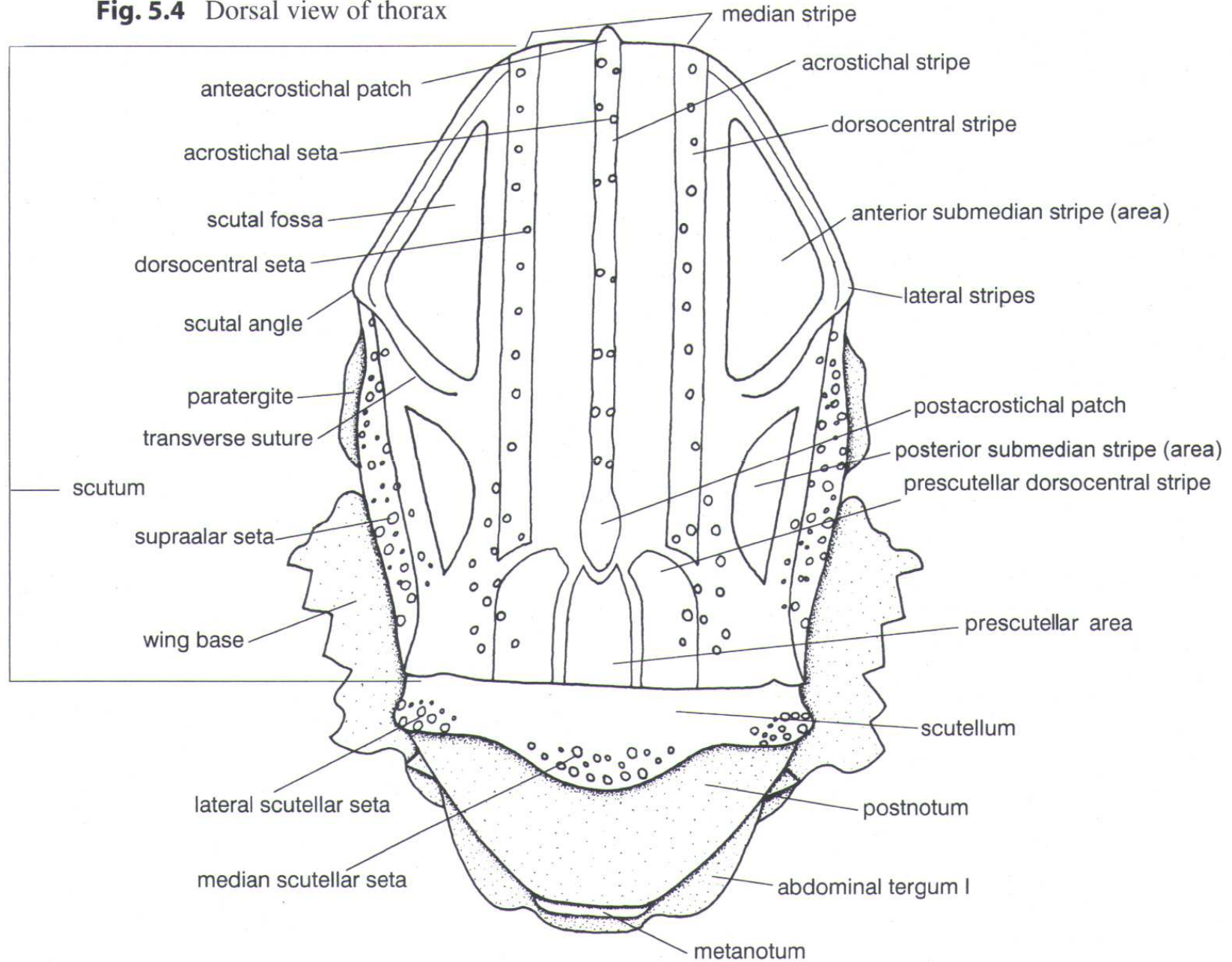
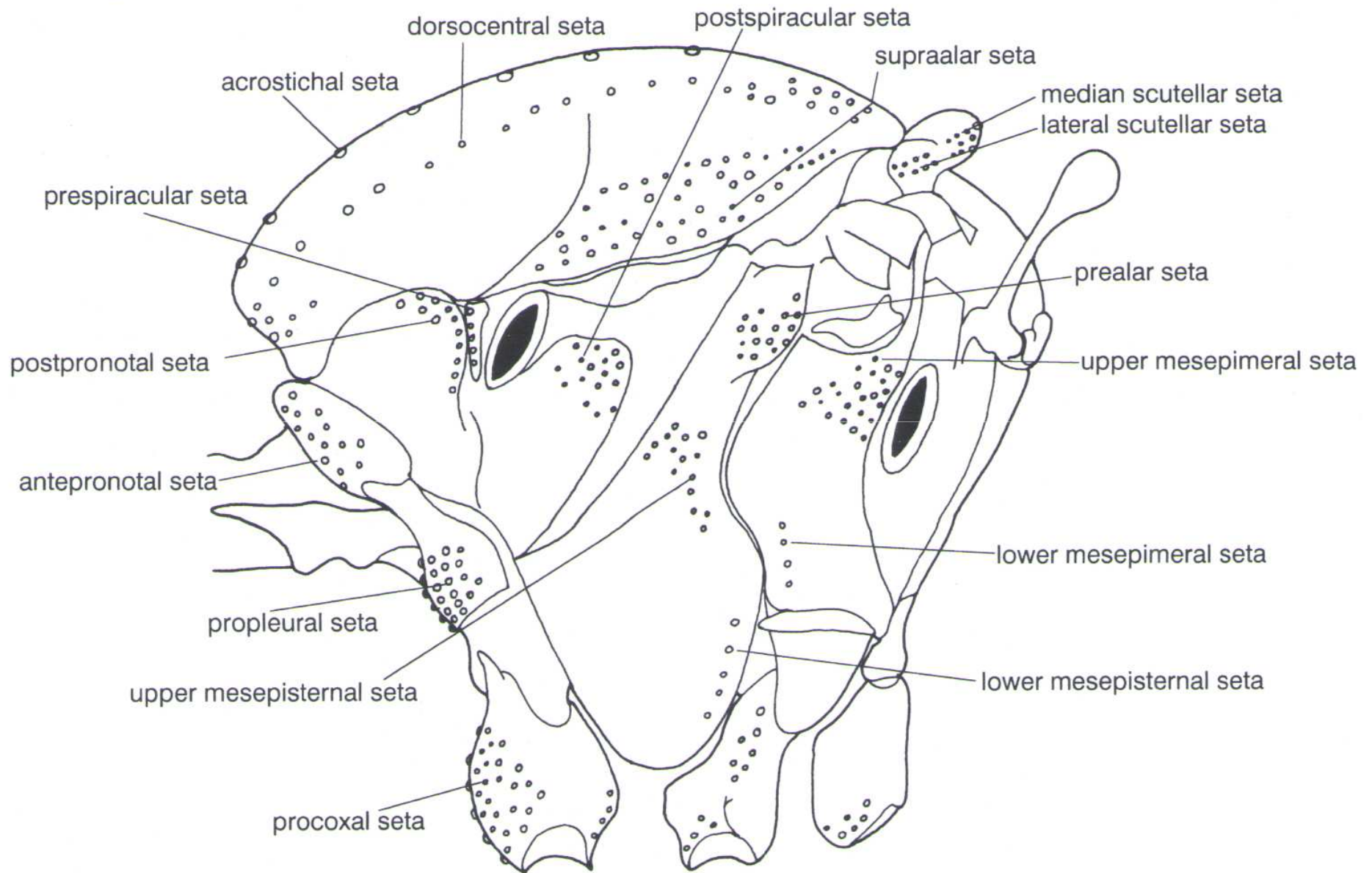
Fig. 5.4 Dorsal view of thorax

Fig. 5.6 Lateral view of thorax – setation

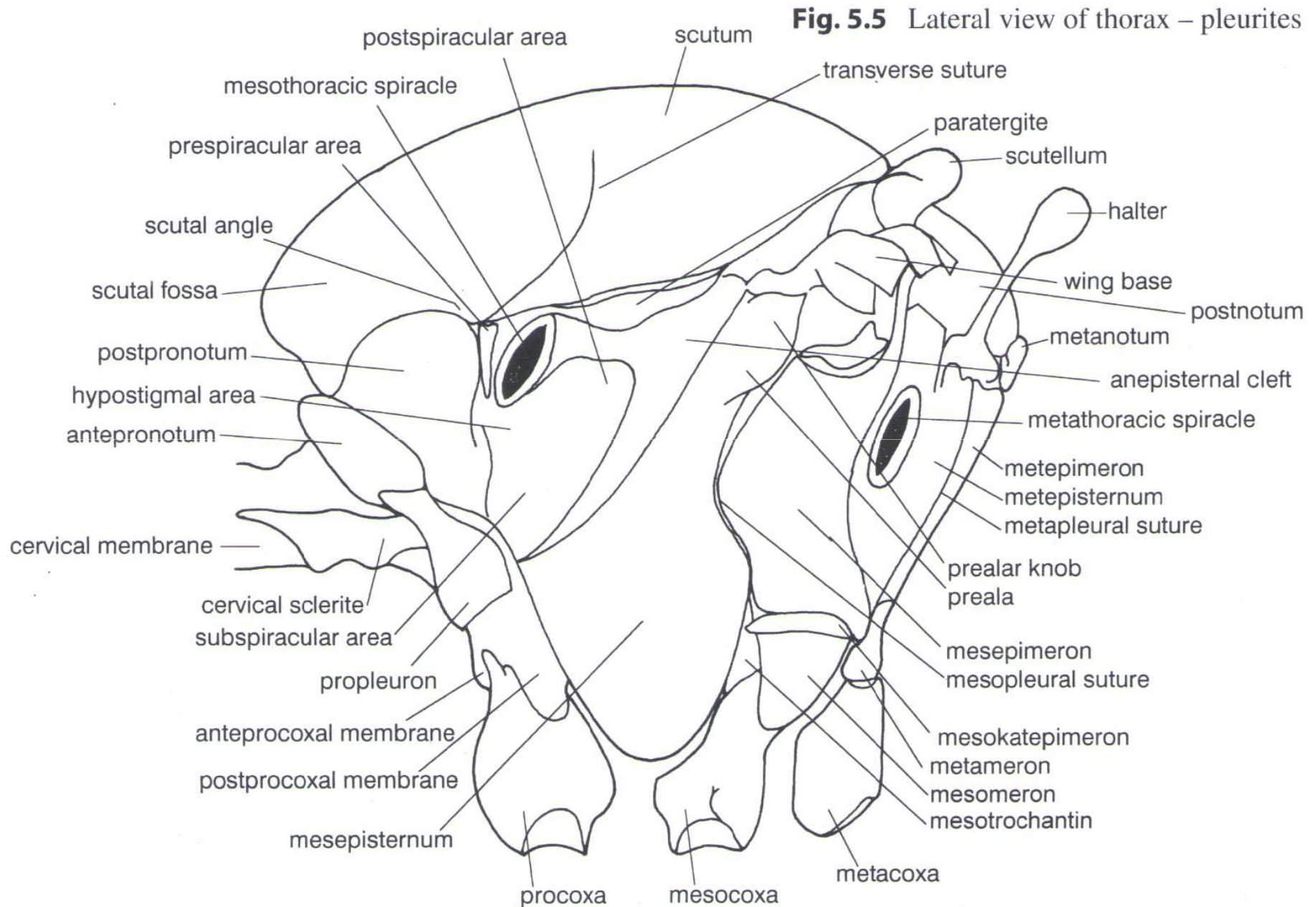


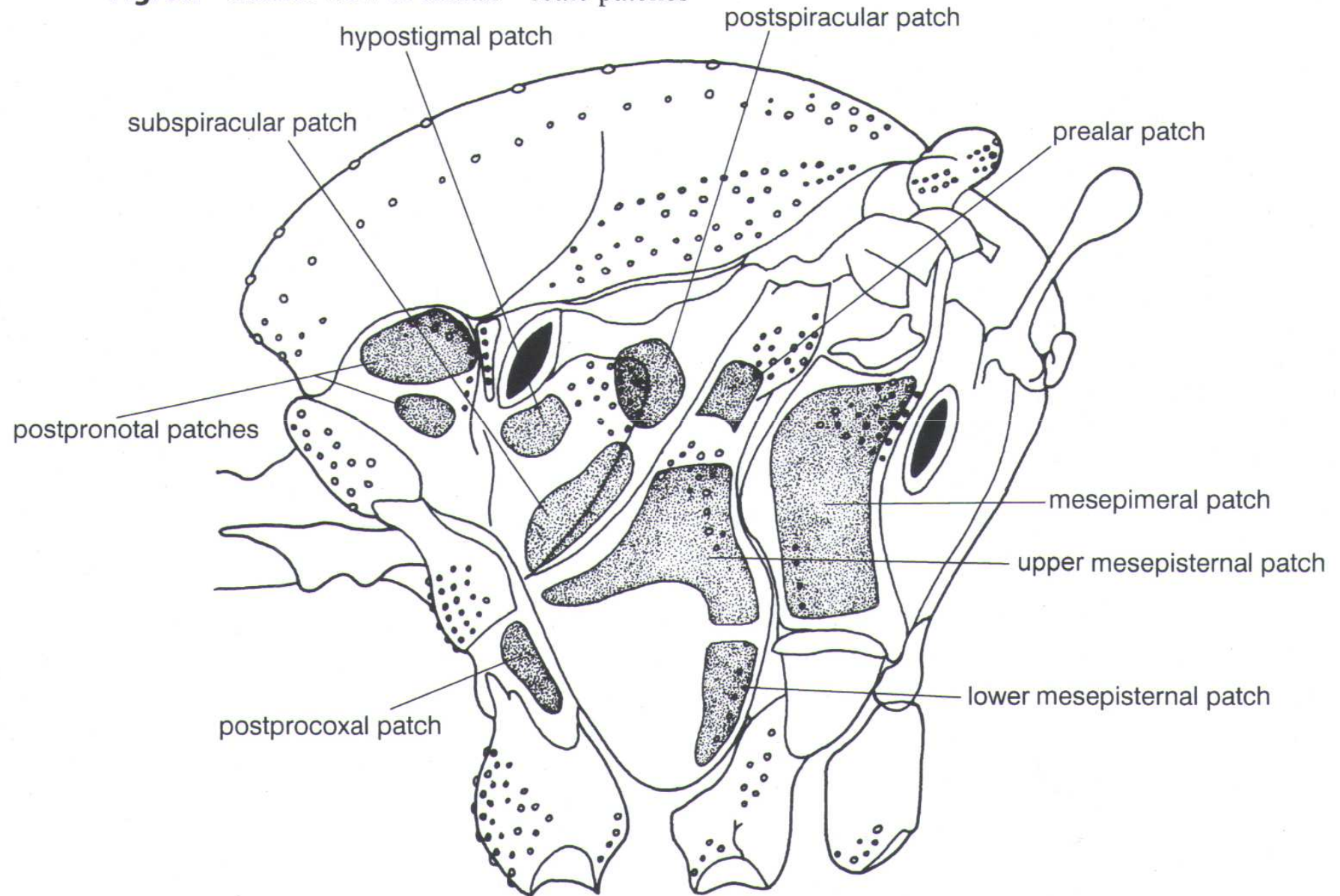
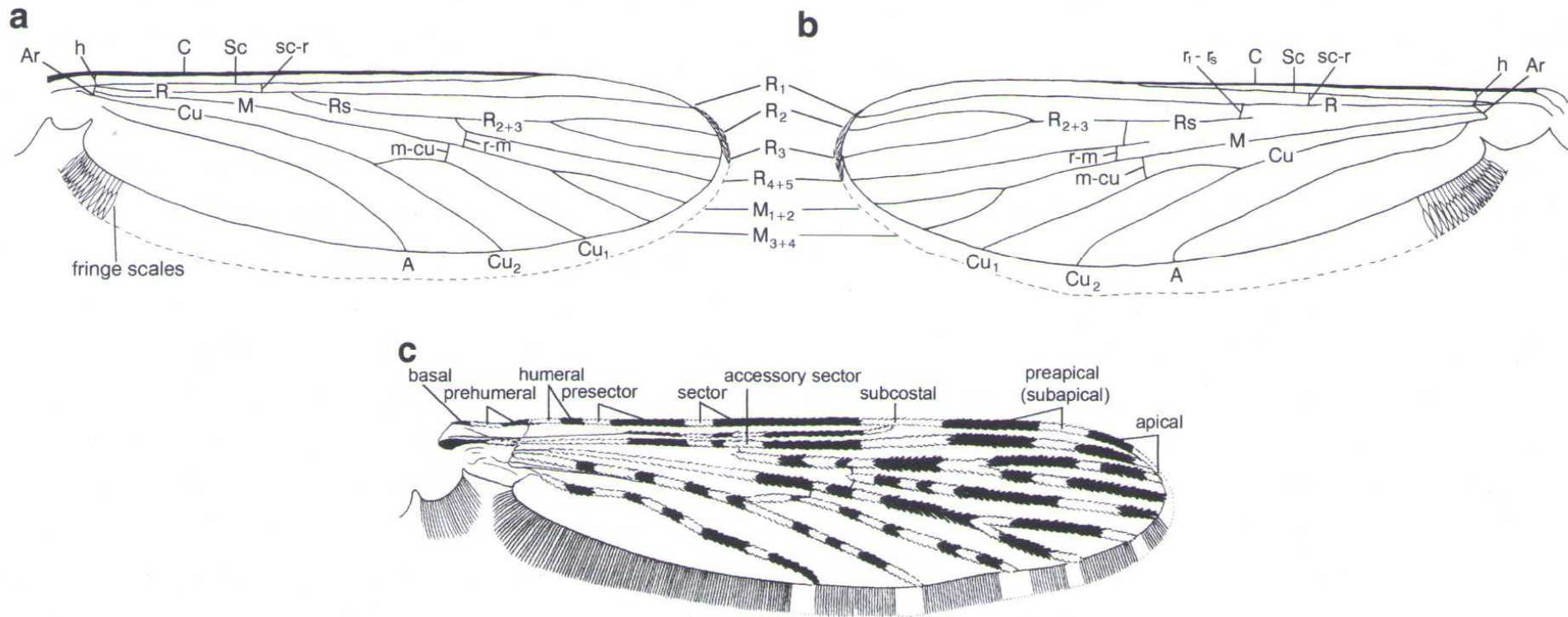
Fig. 5.7 Lateral view of thorax – scale patches

Fig. 5.8 Wing of (a) Culicinae; (b) Anophelinae (c) nomenclature of wing spots in certain *Anopheles* spp.



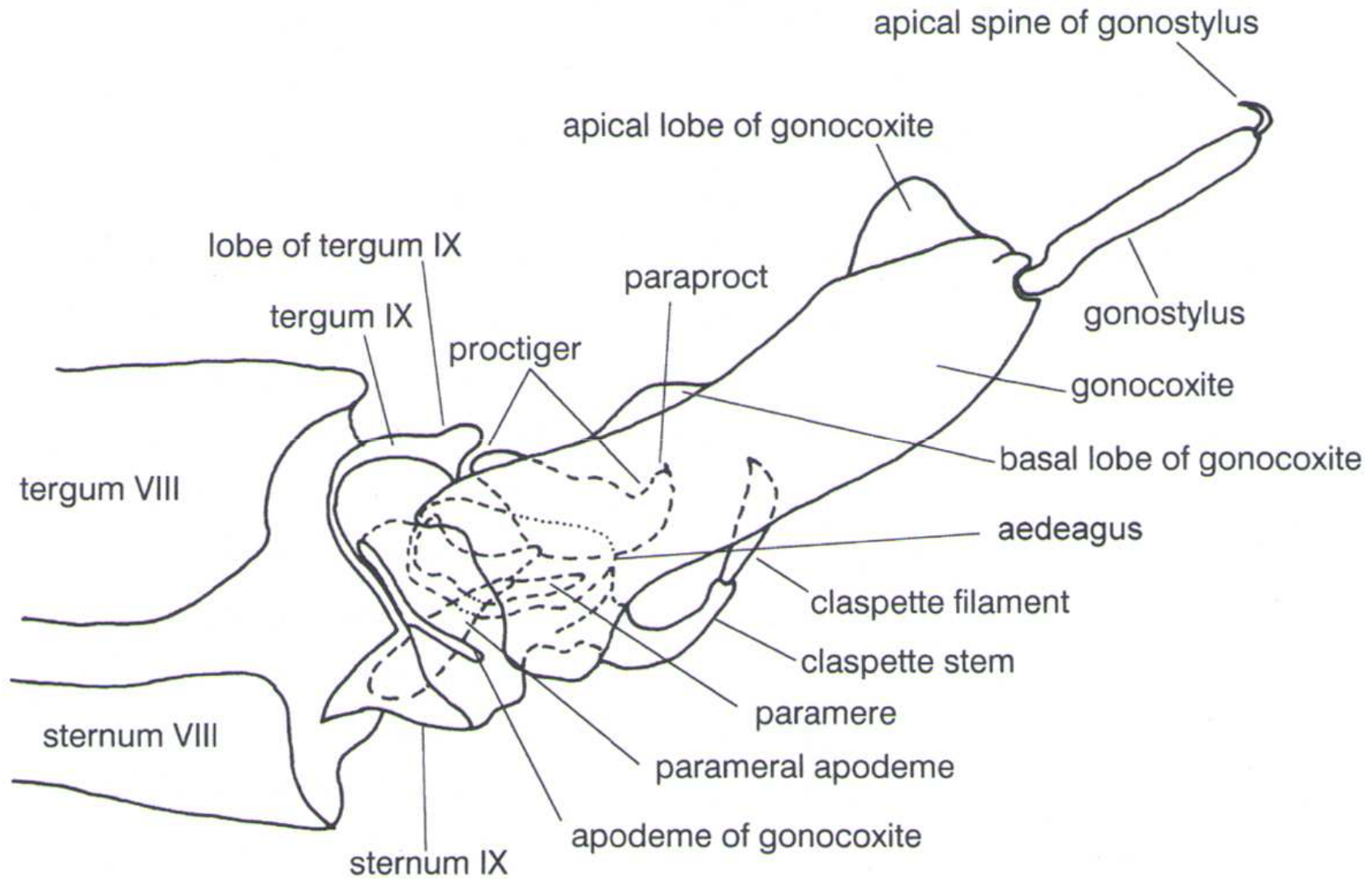
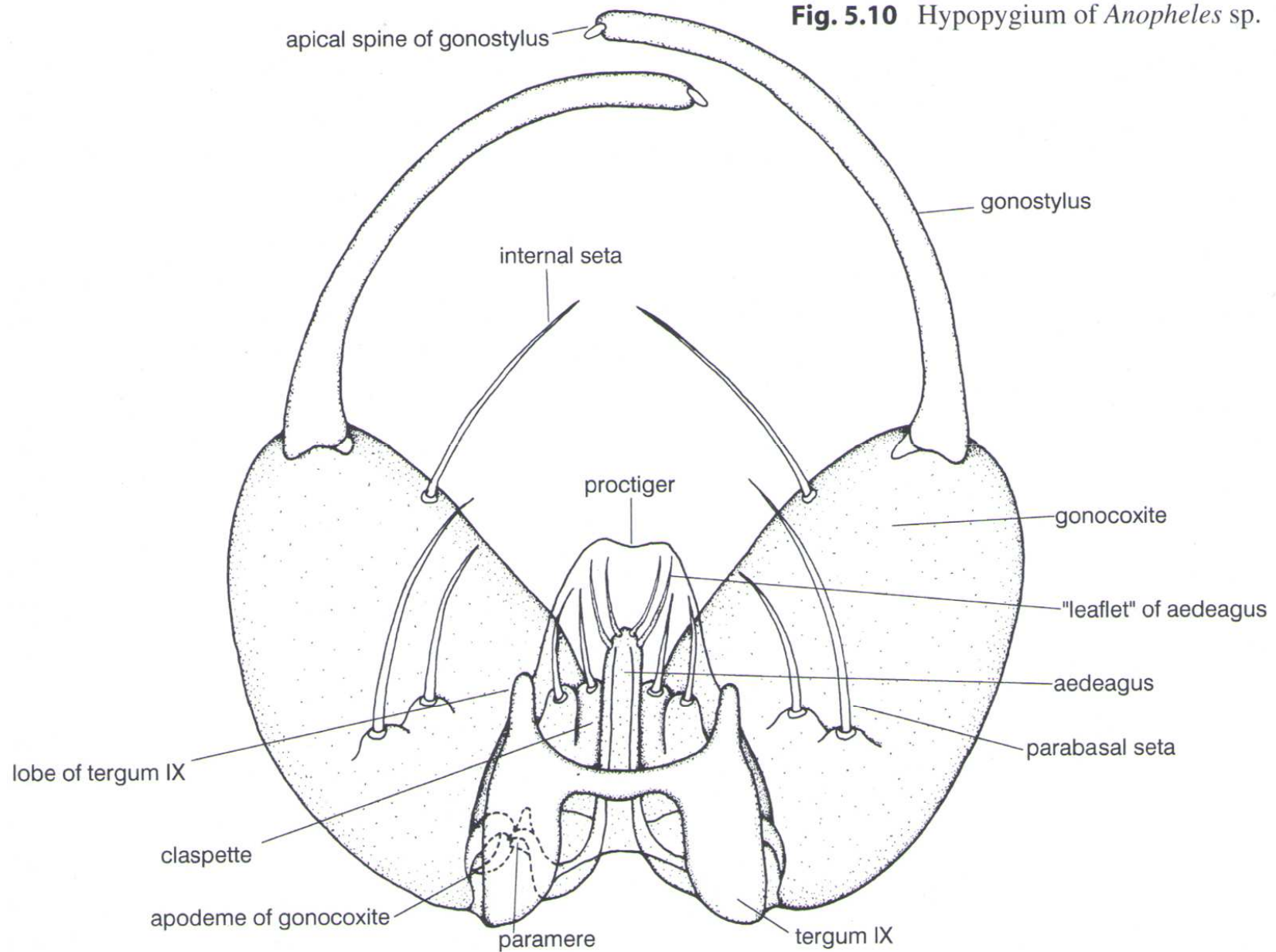


Fig. 5.9 End of abdomen of *Aedes/Ochlerotatus* sp. – male, lateral view



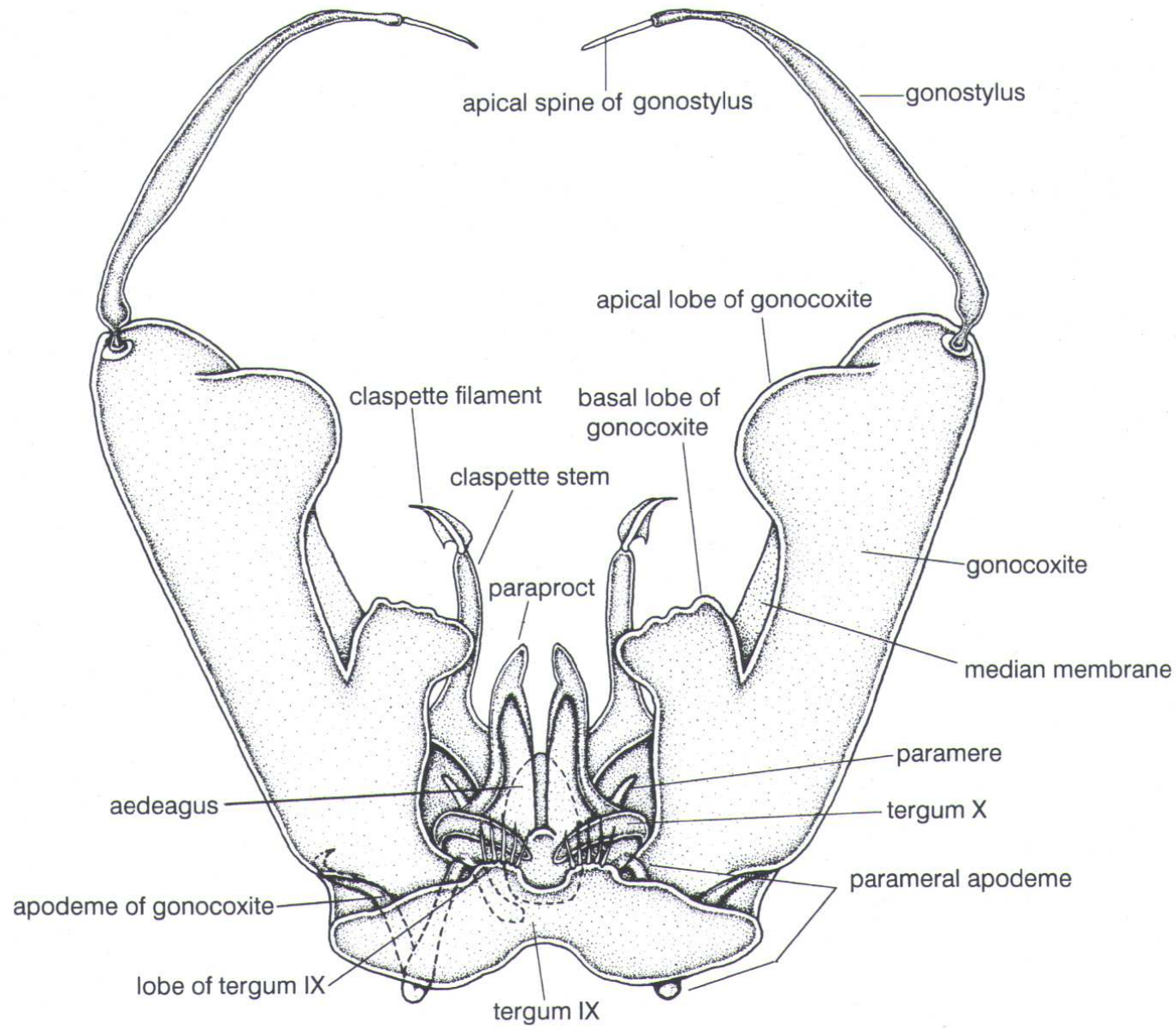
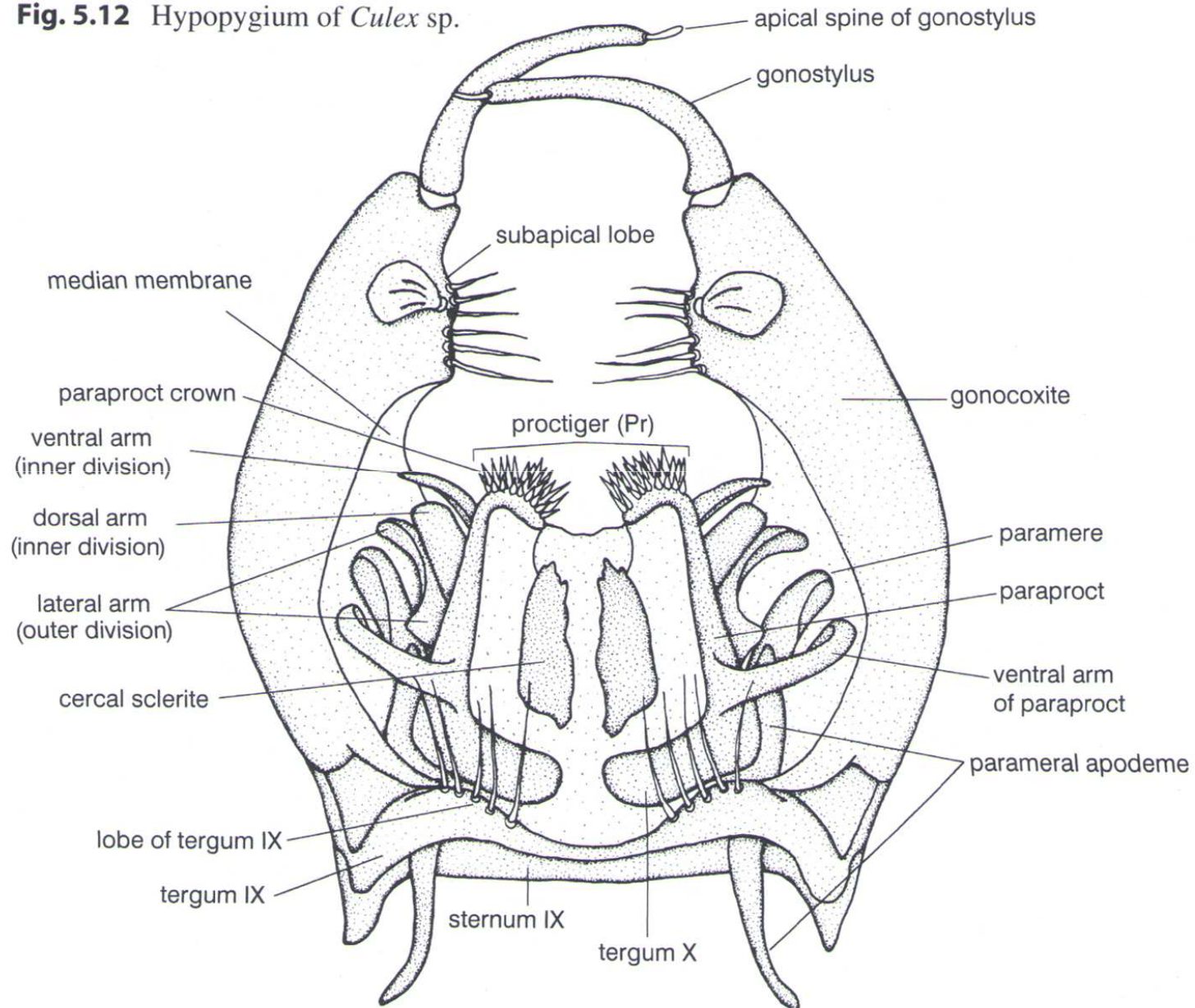


Fig. 5.11 Hypopygium of *Aedes/Ochlerotatus* sp.

Fig. 5.12 Hypopygium of *Culex* sp.

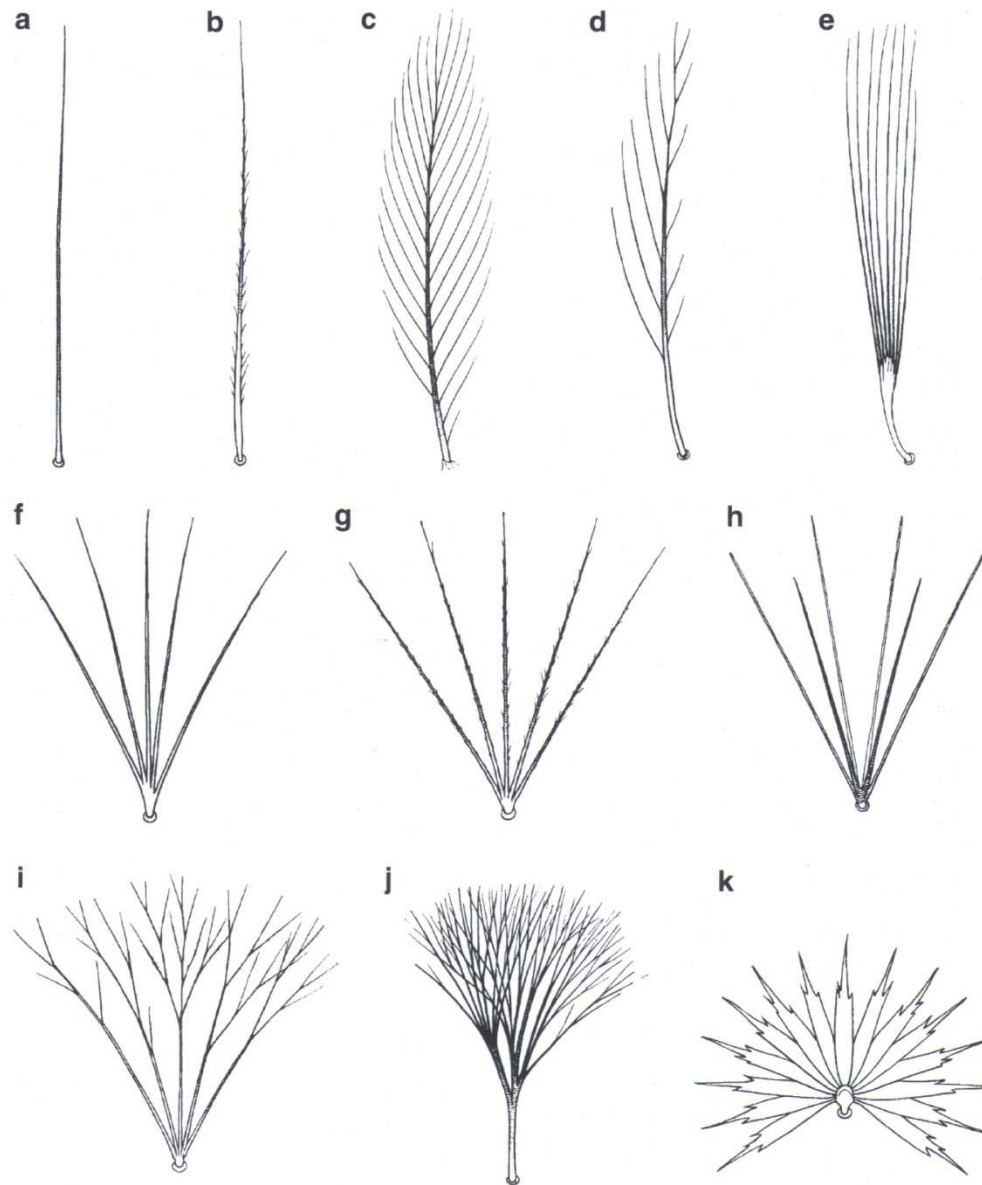


Fig. 5.13 Types of larval setae: (a) simple; (b) aciculate; (c) pinnate or plumose; (d) lateral branched; (e) fan like; (f, g) branched; (h) stellate; (i, j) dendriform; (k) palmate (after Marshall 1938)

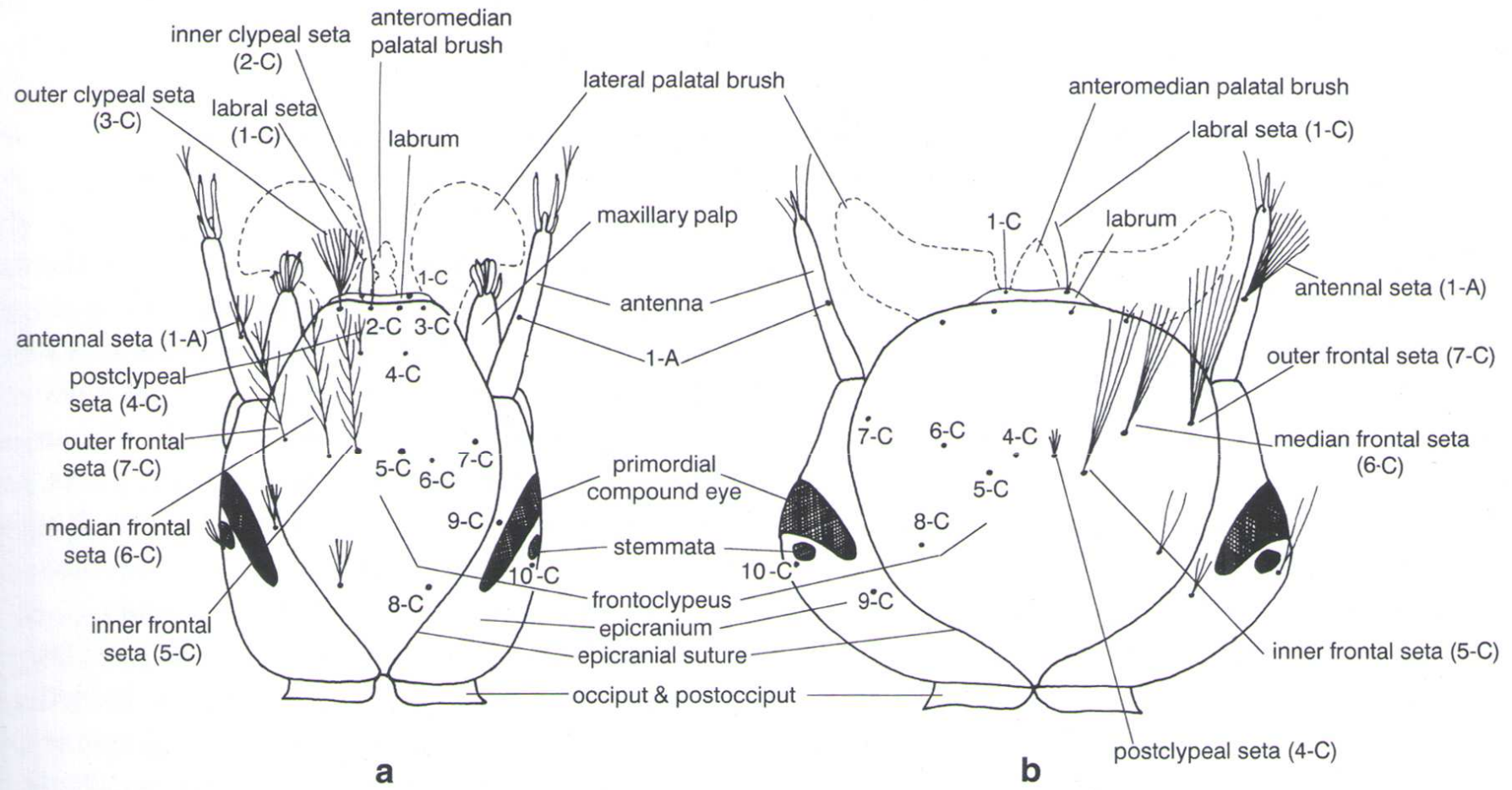


Fig. 5.14 Head of larva – dorsal view (a) Anophelinae; (b) Culicinae

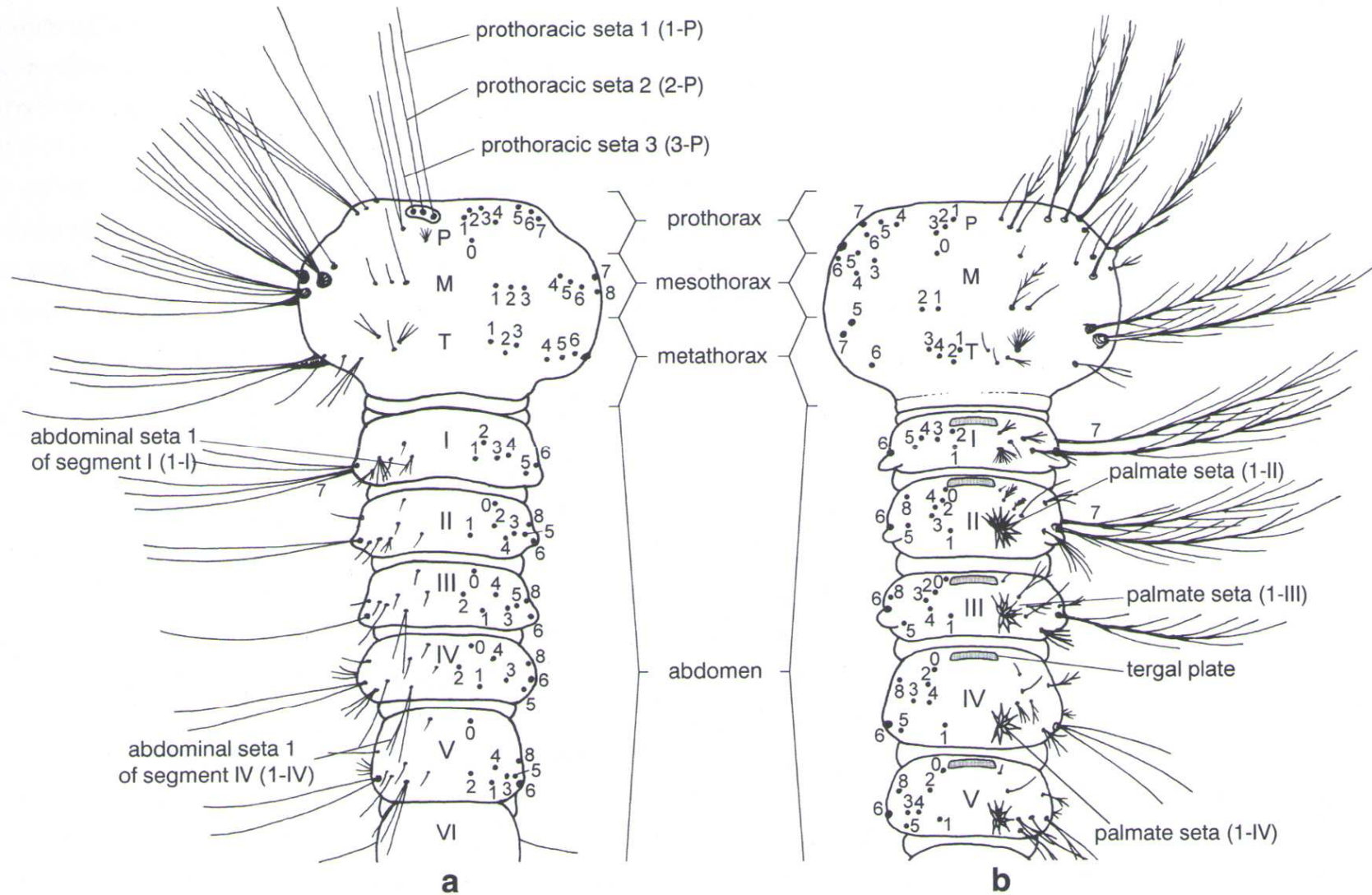
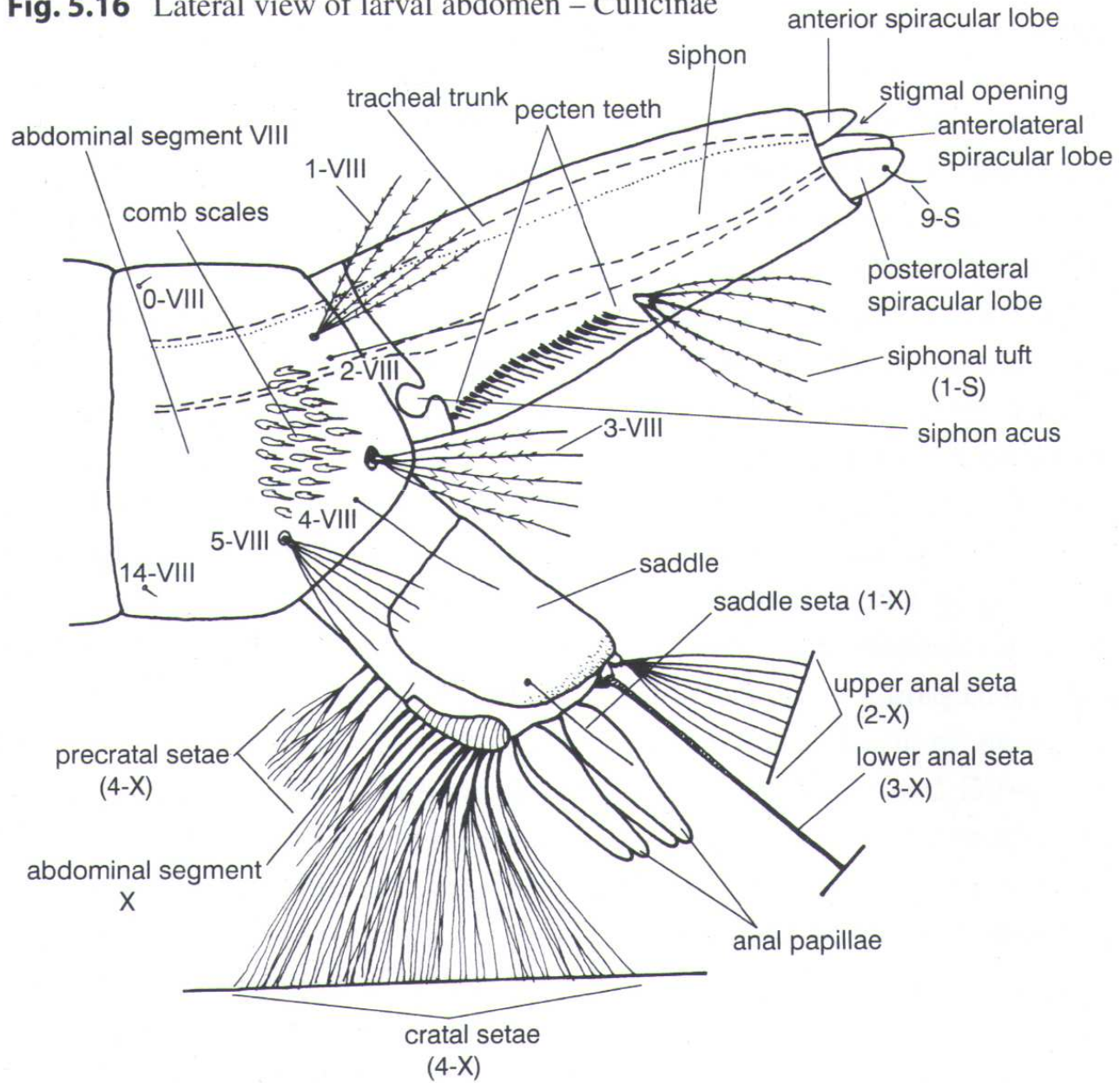


Fig. 5.15 Thorax and abdomen – dorsal setation (a) Culicinae; (b) Anophelinae

Fig. 5.16 Lateral view of larval abdomen – Culicinae



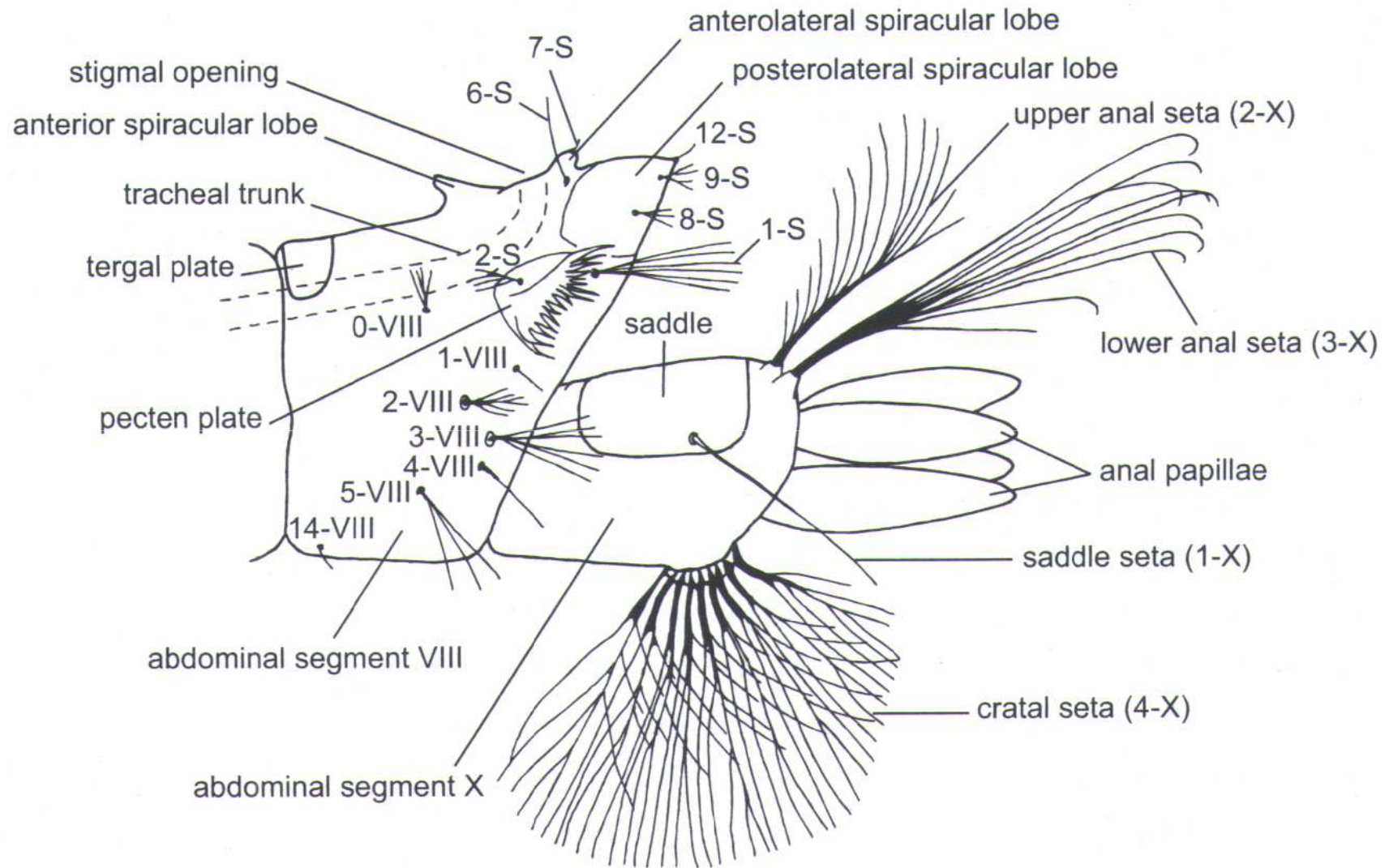


Fig. 5.17 Lateral view of larval abdomen – Anophelinae

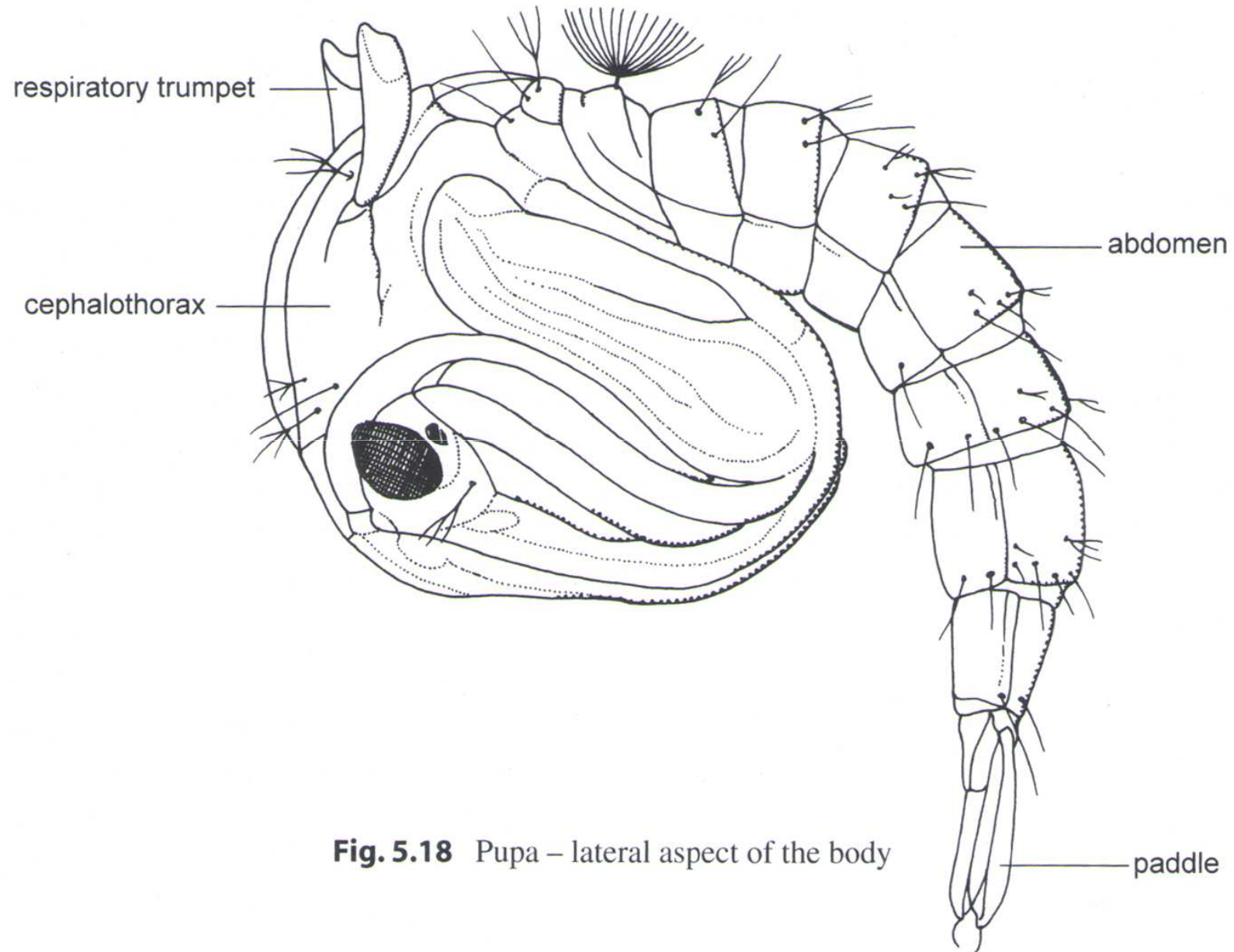


Fig. 5.18 Pupa – lateral aspect of the body

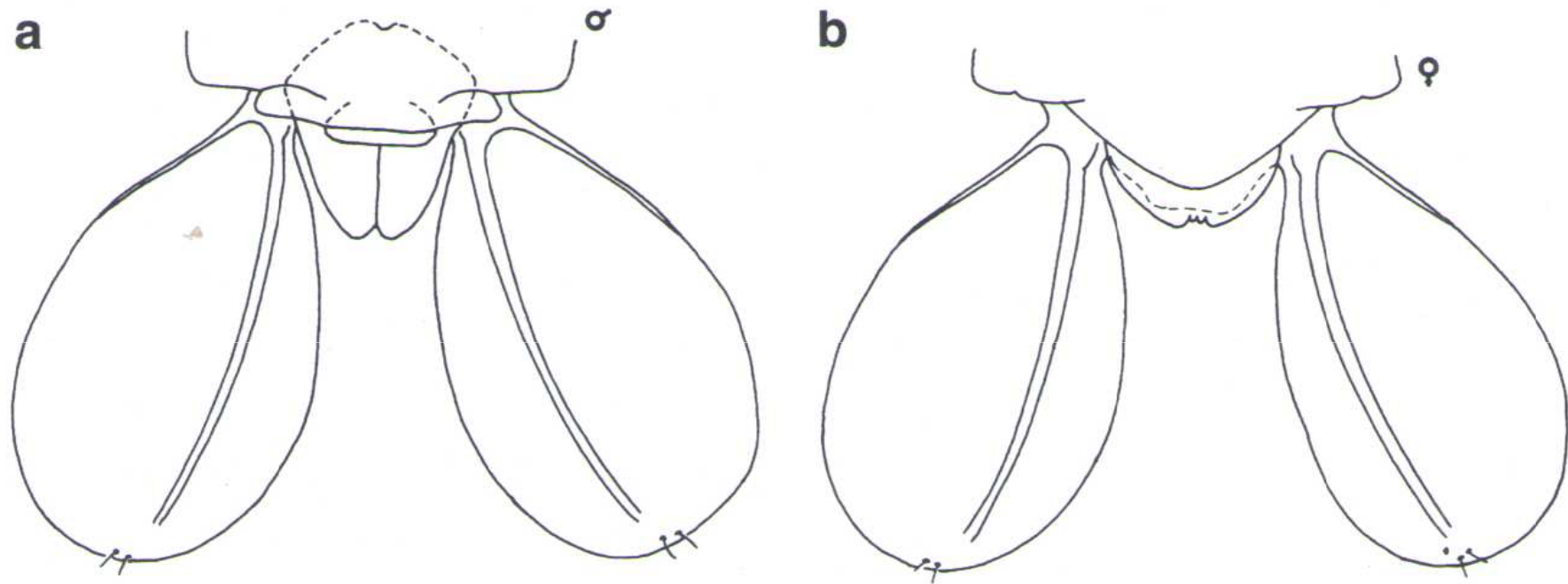


Fig. 5.20 Abdomen of pupa, (a) male; (b) female

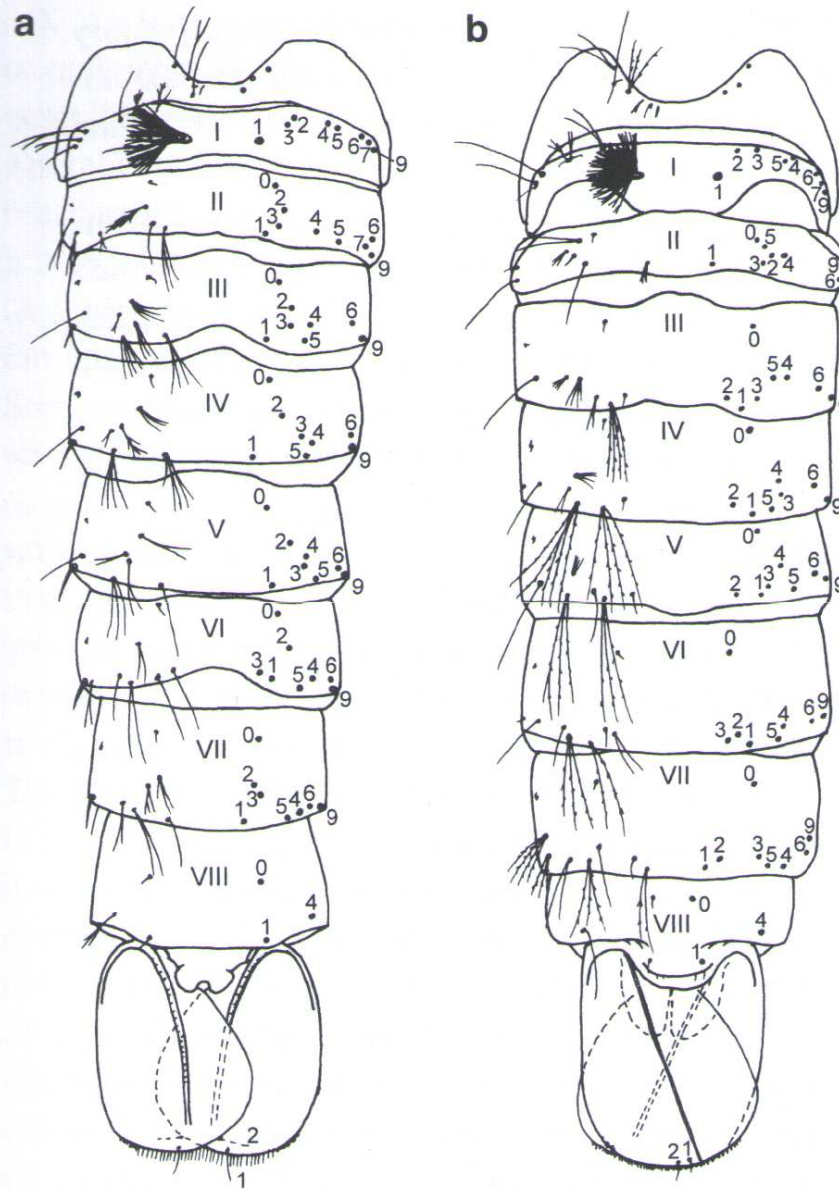


Fig. 5.19 Abdominal setation of pupa – dorsal view,
 (a) Anophelinae; (b) Culicinae

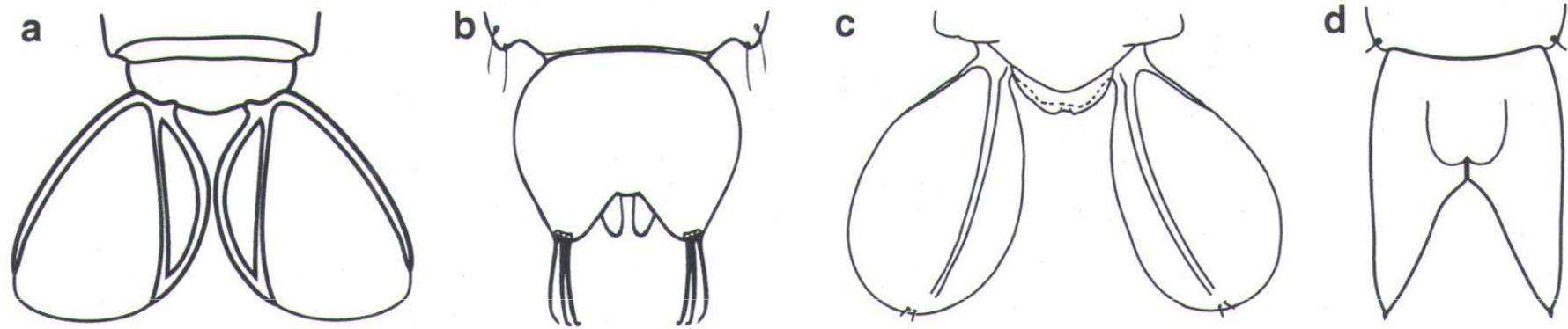


Fig. 5.21 Abdomen of pupa, (a) Chaoboridae; (b) Chironomidae; (c) Culicidae; (d) Dixidae (after Cranston et al. 1987)